

Table of Contents

Wireless Tips.....	1
Westell Model 7500	2
Changing the Wireless Network Name And/Or Channel	3
Wireless Security.....	4
Westell Model 327W	7
Changing the Wireless Network Name And/Or Channel	8
Wireless Security.....	10

Wireless Tips

Your new Hawaiian Telcom wireless modem will help you better utilize your High Speed Internet Service. In most situations, you will now be able to utilize HSI anywhere in your home.

Here are some tips that will enable you to optimally utilize wireless (Wi Fi) in your home:

Wireless modems utilize frequencies that are utilized by other devices that may be in your home such as: cordless phones, garage door openers, or microwave ovens. Place your wireless modem away from these devices to minimize interference to your service.

For optimal performance, your wireless modem should be located on a bookshelf or other elevated location. Do not locate your modem on the floor.

During set-up of your wireless network, make sure that you create a unique SSID for your wireless network. The default SSID when you receive your modem is the serial number of your modem. Make sure that you connect to the SSID of your wireless modem and not your neighbor's when utilizing a laptop to access your wireless network.

Hawaiian Telcom cannot guarantee the performance of wireless networks since many factors are involved. If you are not experiencing a satisfactory speed while utilizing your wireless network, use an Ethernet cable to connect to one of the yellow Ethernet ports on the back your wireless modem for the best possible speed.

By not securing your wireless network, you are inviting unauthorized use of your network by strangers which could affect your own internet experience. Even worse, strangers may try to hack your PC's and steal information from your PCs or monitor your internet usage. You may use this documents to enable or change your wireless security settings on your modem.

Your wireless modem has several channels available for use. If you are experiencing poor performance you may be utilizing a channel that your neighbors are utilizing. Use the information in this document to change the channel that your wireless modem is utilizing.

Westell Model 7500

Configuration of wireless network name (SSID) and wireless security on Westell Model 7500

While configuring the Westell 7500, it is recommended to use a computer that is connected directly to the modem using an Ethernet cable (it is possible to configure the modem over a wireless connection, but connectivity to the modem will be temporarily interrupted when the modem settings are changed).

Open your internet browser (i.e. Internet Explorer, Safari, etc.) and type <http://192.168.200.1> into the address bar and press Enter (Fig.1). This will take you to the modem status page (Fig. 2).



Figure 1

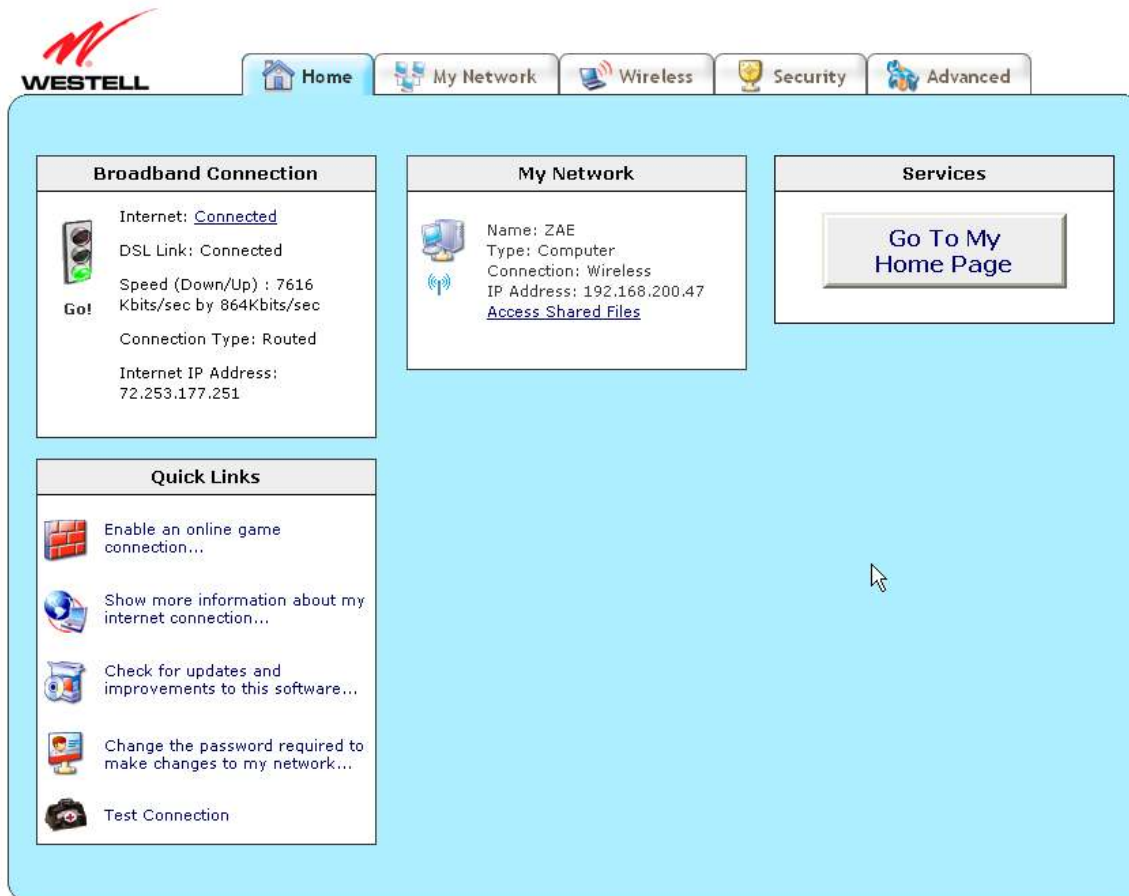


Figure 2

Changing the Wireless Network Name And/Or Channel

In order to configure the wireless network name that is broadcast by the modem, click on the Wireless tab on the top menu. This will take you to the Wireless Basic Setup screen (Fig. 3).

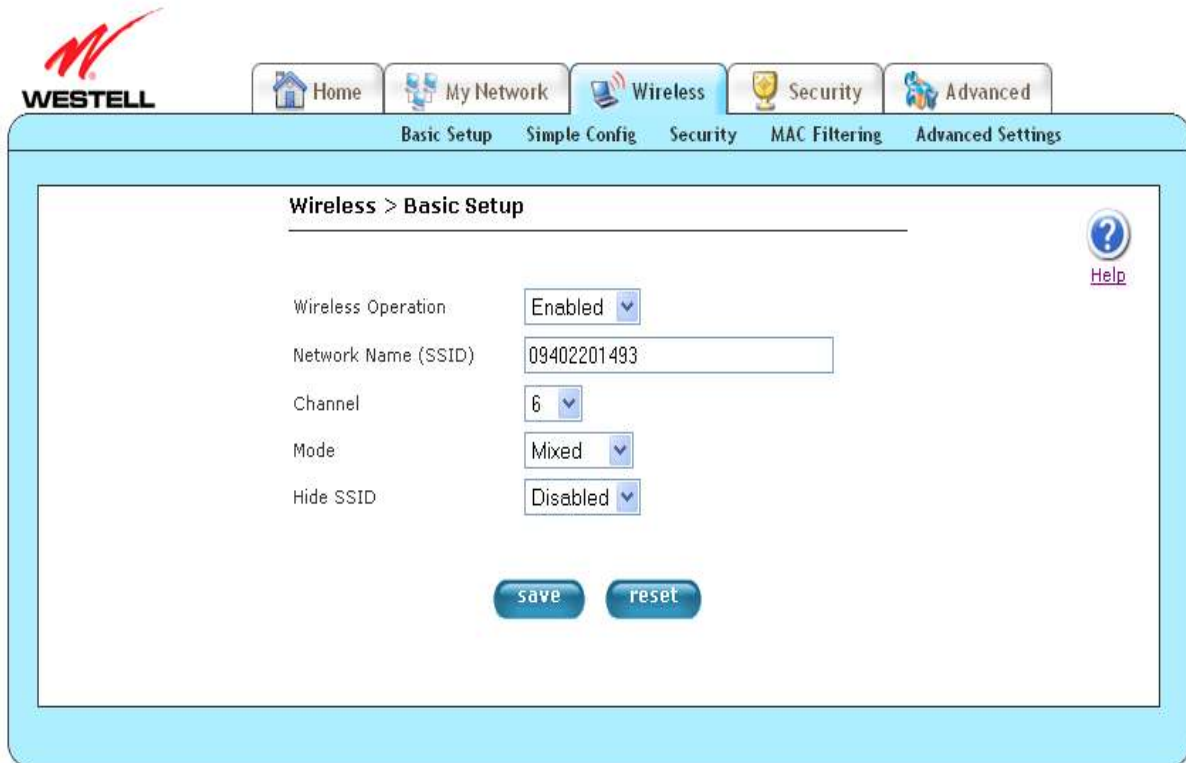


Figure 3

The Network Name (SSID) is the name of your wireless network that the modem will broadcast. Change this entry to the desired network name. If you want to change the Channel that your modem using to broadcast, select the desired channel from the Channel drop down menu. After changes have been made, click the “Save” button. A notification window will open warning that access will be interrupted, click “OK” (Fig. 4). The network name is now changed; all wireless computers must connect to the new network name to get online.

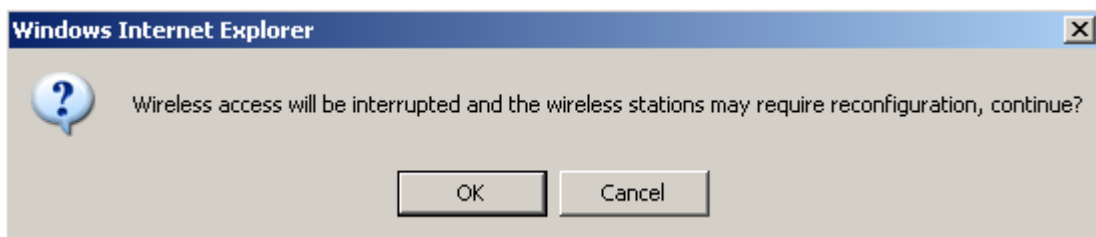


Figure 4

Wireless Security

There are two types of wireless security available on the Westell 7500 modem--WPA and WEP. WPA is newer and more secure than WEP, but may not be compatible with older network cards.

On the main menu, click on the Wireless tab on the top menu and then click on the Security link below the top menu tabs. The next screen will be the Wireless Security screen (Fig. 5). By default wireless security is set to WEP. To enable or change the security, select the desired Wireless Security option from the drop down menu (Fig. 6).



Figure 5

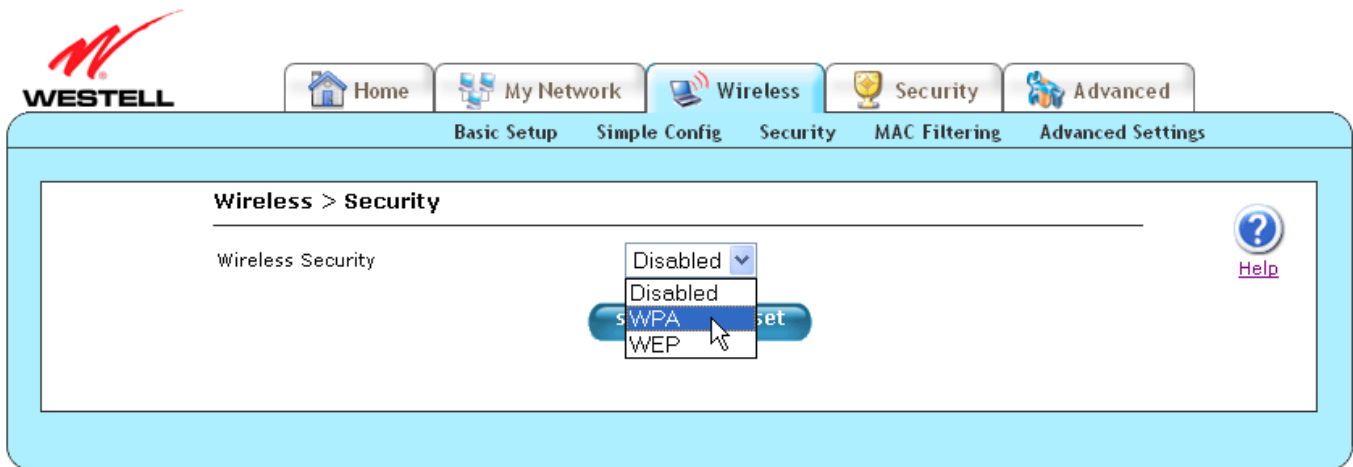


Figure 6

To configure WPA-PSK, type the desired password in the WPA Shared Key field (Fig. 7). The password must range from 8 to 63 text characters.

To configure WEP security, type the desired password in the Key 1 field (Fig. 8). The password must be 5 or 13 text characters exactly.

Click the “save” button to set the password. A notification window will open warning that access will be interrupted, click “OK” (Fig. 4). When connecting to the wireless network, the user should now be prompted to enter the password key.



Figure 7

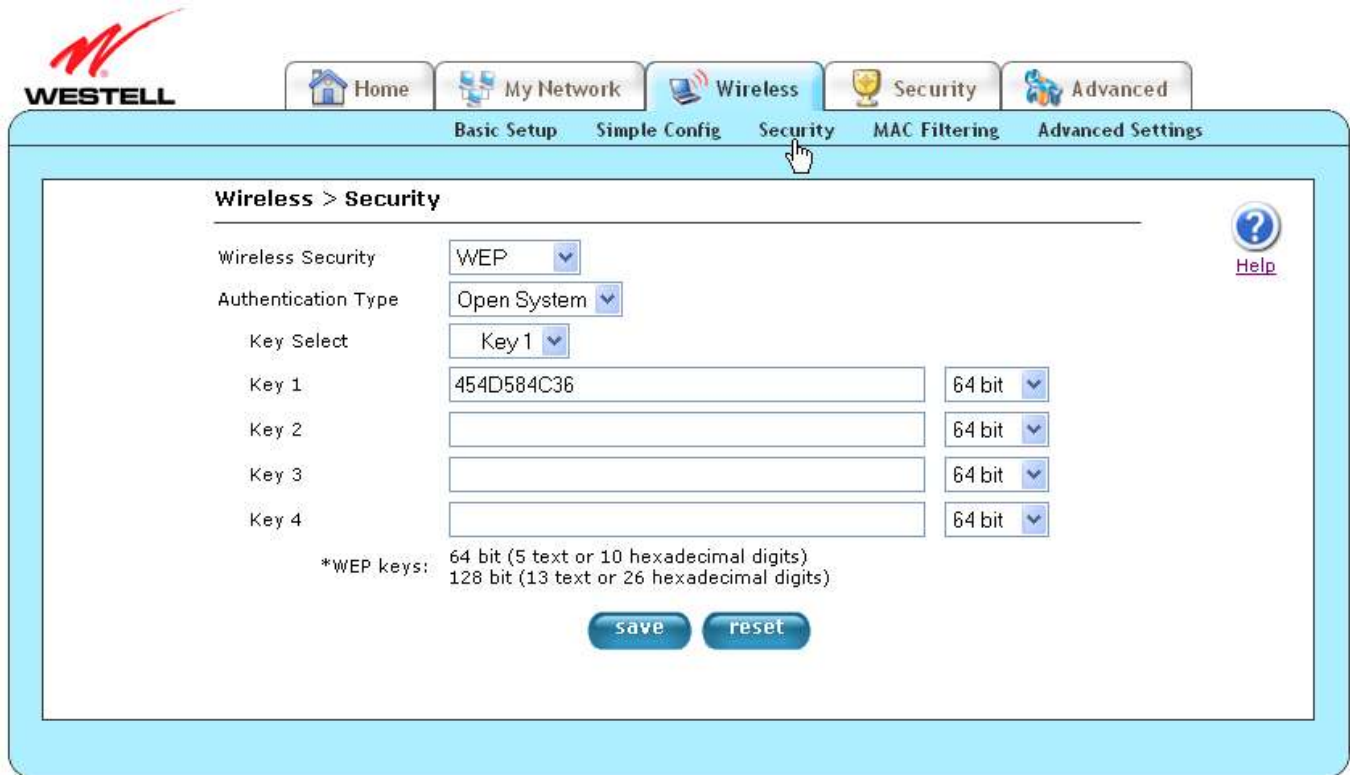


Figure 8

When finished, simply close the internet browser.

Westell Model 327W

Configuration of wireless network name (SSID) and wireless security on Westell 327W

While configuring the Westell 327W, it is recommended to use a computer that is connected directly to the modem using an Ethernet cable (it is possible to configure the modem over a wireless connection, but connectivity to the modem will be temporarily interrupted when the modem settings are changed).

Open your internet browser (i.e. Internet Explorer, Safari, etc.) and type <http://192.168.1.1> into the address bar and press Enter (Fig.1). This will take you to the modem status page (Fig. 2).

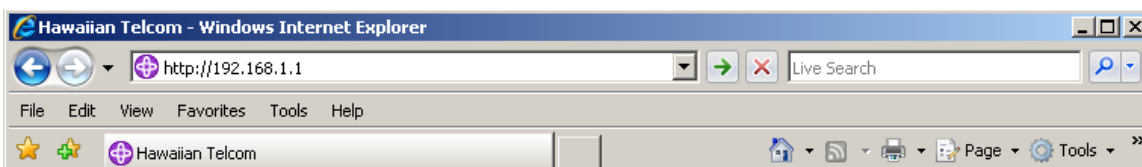


Figure 4



Connection Overview

DSL Connect Rate (Down/Up) 3360 Kbits/sec by 864 Kbits/sec

Connection Name	Connection Status		
Routed Bridge	UP	release	renew

[profile editor](#)

Profile with the ° is your default profile. To make changes to your default profile click on the profile editor button.

Figure 5

Changing the Wireless Network Name And/Or Channel

In order to configure the wireless network name that is broadcast by the modem, click on Configuration > Wireless > Basic (Fig. 3). You may be prompted to log into the modem (Fig. 4). If so, log in with the username “admin” and the password “password”. This will take you to the Wireless Configuration screen (Fig. 5).



Figure 6

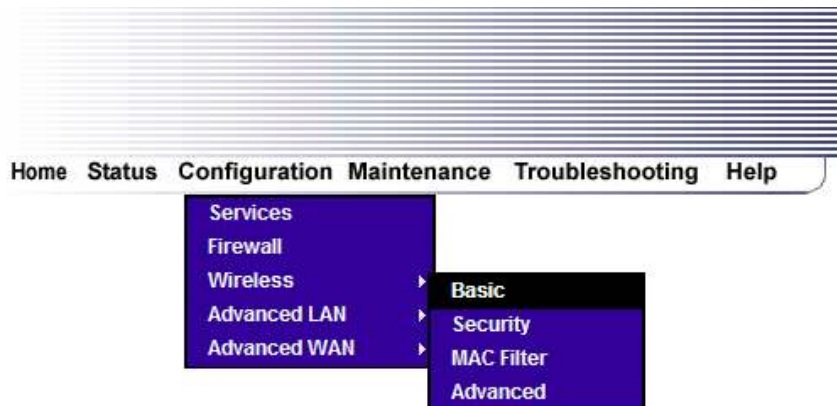
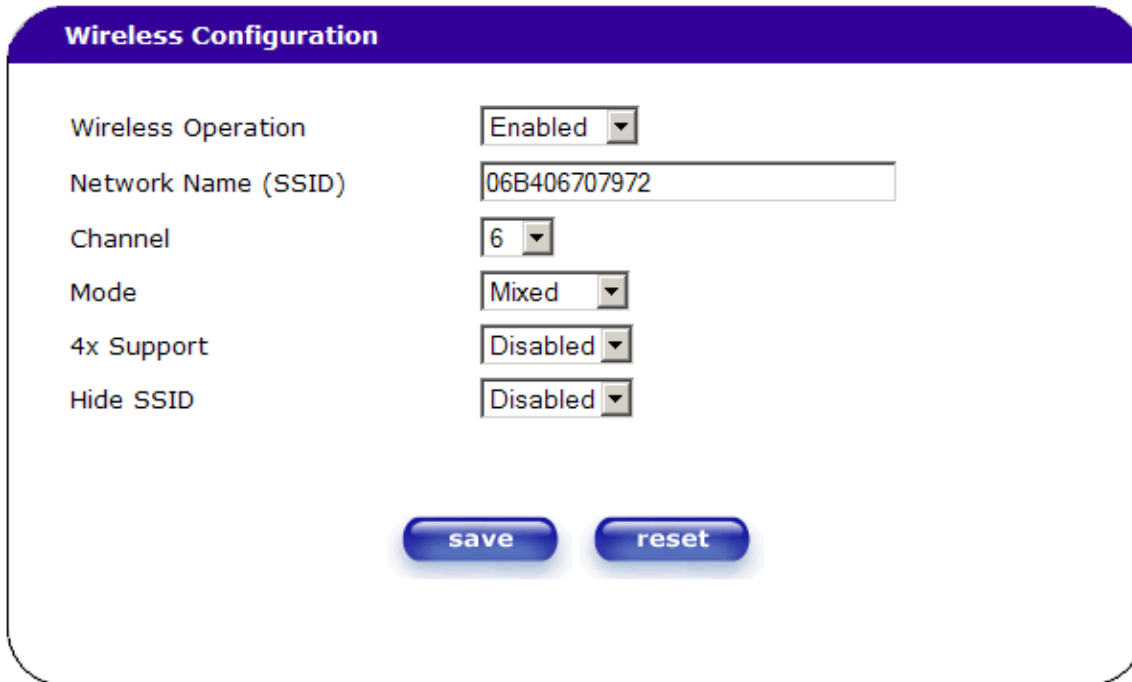


Figure 7



The image shows a 'Wireless Configuration' window with a purple header. It contains several settings: 'Wireless Operation' is set to 'Enabled'; 'Network Name (SSID)' is '06B406707972'; 'Channel' is '6'; 'Mode' is 'Mixed'; '4x Support' is 'Disabled'; and 'Hide SSID' is 'Disabled'. At the bottom, there are two blue buttons labeled 'save' and 'reset'.

Figure 8

The Network Name (SSID) is the name of your wireless network that the modem will broadcast. Change this entry to the desired network name. If you want to change the Channel that your modem using to broadcast, select the desired channel from the Channel drop down menu. After changes have been made, click the “Save” button. A notification window will open warning that access will be interrupted, click “OK” (Fig. 4). The network name is now changed; all wireless computers must connect to the new network name to get online.

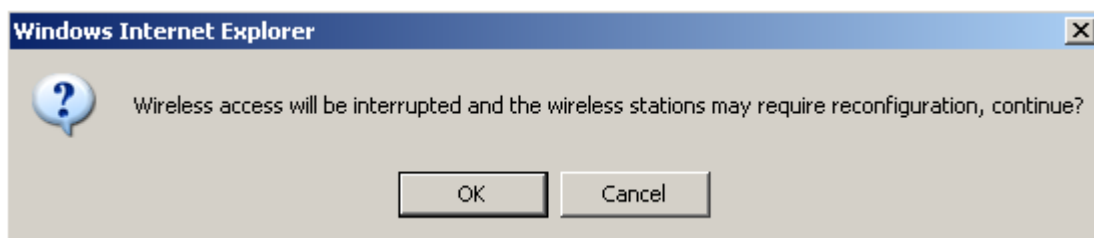


Figure 9

Wireless Security

There are two types of wireless security available on the Westell 327W modem, WPA-PSK and WEP. WPA is newer and more secure than WEP, but may not be compatible with older network cards.

On the main menu, click on Configuration > Wireless > Security (Fig. 7). You may be prompted to log into the modem (Fig. 4). If so, log in with the username “admin” and the password “password”. The next

screen will be Wireless Security screen. By default wireless security is disabled. To enable, select the desired security type—WPA-PSK or WEP (Fig. 8).

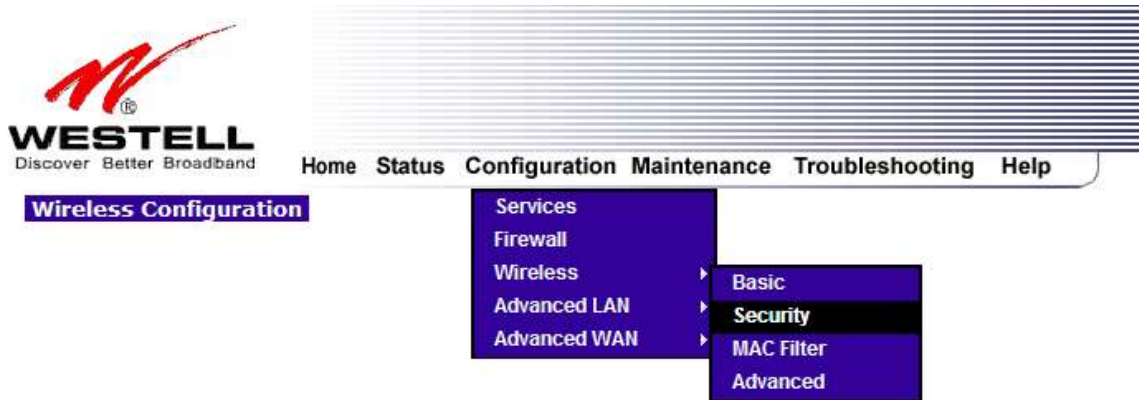


Figure 10

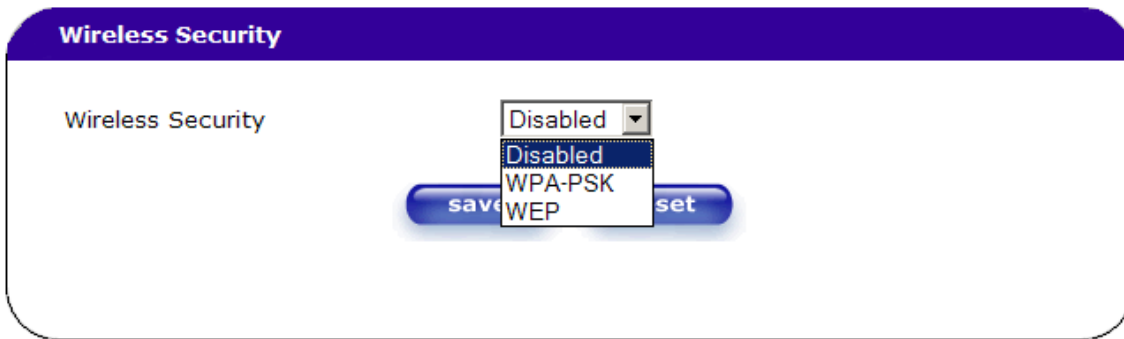


Figure 11

To configure WPA-PSK, type the desired password in the WPA Shared Key field (Fig. 9). The password must range from 8 to 63 text characters.

To configure WEP security, type the desired password in the Key 1 field (Fig. 10). The password must be 5, 13, or 29 text characters exactly.

Click the “save” button to set the password. A notification window will open warning that access will be interrupted, click “OK” (Fig. 6). When connecting to the wireless network, the user should now be prompted to enter the password key.

Wireless Security

Wireless Security

WPA Shared Key

WPA Group Rekey Interval

*WPA key: must be 8 to 63 text characters or 64 hexadecimal digits in length

Figure 12

Wireless Security

Wireless Security

Authentication Type

Key Select

Key 1

Key 2

Key 3

Key 4

*WEP keys: 64 bit (5 text or 10 hexadecimal digits)
 128 bit (13 text or 26 hexadecimal digits)
 256 bit (29 text or 58 hexadecimal digits)

Figure 13

When finished, simply close the internet browser.